

INCREASE SALES 2X - 3X, ACHIEVE OPTIMAL TURNOVER AND MIX, OR EXIT THE MARKETPLACE FOR RETURNS UP TO 110% SALES-TO-INVENTORY COST



RETAIL SOLUTIONS & ASSET DISPOSITION

HOW WE HELP

- ▶ Inventory Optimization
- ▶ Retail Promotion
- ▶ Store Closing Sales
- ▶ Guided Self-Liquidations
- ▶ eCommerce Solutions & Liquidation
- ▶ Asset Disposition

WHO WE ARE



Fortis Business Advisors has the unmatched expertise required to address inventory challenges retailers and other small businesses face. We execute a marketing program and promotion that combines elevating awareness of the business while turning inventory into quick cash. This translates into a disciplined approach that helps define and deliver the strategic initiatives necessary to ensure capital is not left on the table.

SOME OF OUR CLIENTS WERE SKEPTICAL... THEN THEY SAW THE RESULTS



*Multi-store Jewelry Retailer: A Guided Self-Liquidation increases cash flow and pares back stores resulting in **126% actual to projected sales.***



*Multi-store Hardware Retailer: Combination liquidation and promotion yields average of **125.7%** sales-to-inventory cost in **Chapter 11 Bankruptcy.***



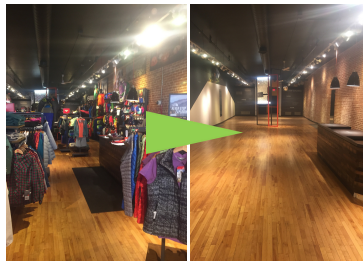
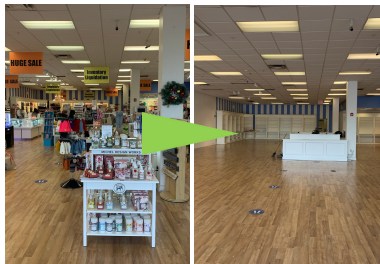
*Fabric & Craft Retailer: In an Assignment for the Benefit of Creditors, "dark" store operation generates a **93.1%** sales-to-inventory cost return.*



*Bank-owned Apparel Retailer: After a borrower turned over the keys, "dark" store generates **99.9%** sales-to-inventory cost return.*



*Electronics & Home Theater Retailer: **96.2%** sales-to-inventory cost return generated within a set timeframe for absentee owners.*



"The opening day was the biggest day of sales volume in memory. And in days to come, we saw increases in traffic and volume that we had not seen in years."

WHAT THEY SAY



"The way the store was prepared created an urgency leading to a buying frenzy that led to selling old inventory for the most amount of money I could have expected."



FORTIS
BUSINESS ADVISORS

FortisBA.com
770.744.0753
info@FortisBA.com